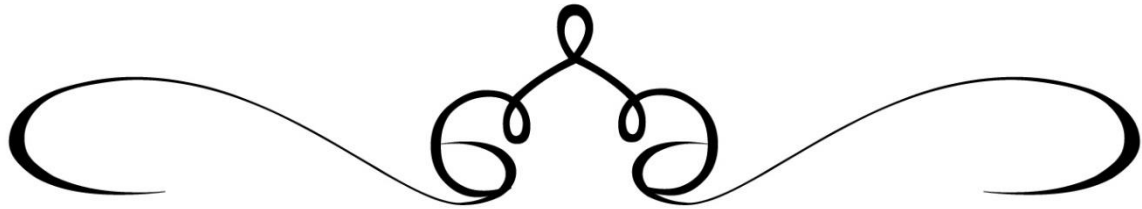




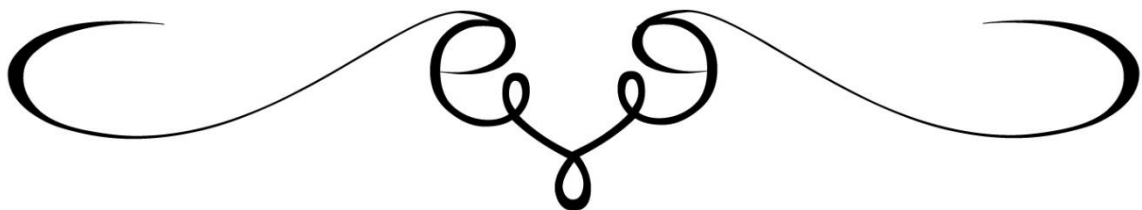
May 7, 2020



All are invited to join the Graduation Parade for Cavin Clive on Friday, May 8th! We will gather at 4:45p on the parking lot of Webster United Methodist at 600 No. Bompert, Webster Groves, 63119.

Bring your signs, balloons horns and bells to ring!
Graduation cards and gifts may be placed in a communal gift bag.
Decorate your cars if you like with the WGHS orange and black.

Please join us to celebrate our good friend and brother in faith!
We will only drive by his home once, so it will take about 30 minutes tops.



Pastor, Rev. Sharon Kichline
Assistant Pastor, Joshua Krakos
Music Ministry, Lamar Fitzgerald
Youth Ministry, Pastor Paige Foster
Children's Ministry, Trish Sorenson
Secretary, Holly Graham

pastorsharon@websterum.org
assistantpastor@websterum.org
directormusic@websterum.org
directoryouth@websterum.org
directorchildren@websterum.org
secretary@websterum.org

314-961-4133

Facebook.com/WebsterUnitedMethodist/
<https://websterunitedmethodist.org/>



**Stay kind.
It makes you beautiful.**



Hey, it's May! Are you missing your Upper Room?
Our May/June Upper Rooms are in the Elevator Foyer.
If you are not getting out, contact Linda Guth Stangl, at
linda-guth-stangl@live.com, or 314-753-4292

...a note from Bishop Farr



**From the office of
Robert D. Farr
Bishop**

Monday, May 4, 2020

Dear Colleagues in Ministry,

In the days since Holy Week and Easter Sunday, I have found myself asking what is God saying to us during this time of quarantine? How does our response through corporate and private worship, service and generosity honor God? I've heard this strange period of life referred to by some as "[The Great Adaptation](#)," and because of it, we have a unique opportunity to listen and bear witness more deeply, to the way of Jesus.

While my private devotional time has been both challenged and enriched in this season, I have also experienced great disruption and loss. I know that has been true for many Missouri United Methodists. The economic impact on some of our churches has been deeply felt, especially for those positioned within communities that are most vulnerable. Even with the [apportionment relief](#) offered last month, it is hard to anticipate what missional and financial impact this pandemic will have on the long-term health and vitality of the Conference and its churches.

[Some](#) think the coronavirus could reshape the country's religious landscape and wipe out many small houses of worship; but in these last weeks, I have seen something different. I've experienced hope watching the creativity and hearing stories of our churches' resilience.

Because of our shared pain and loss, many of us are itching to get back into our sanctuaries and return to "normal." And yet, as people who do our best to do no harm, we must acknowledge that removing all restrictions may further endanger those most vulnerable in our communities.

For these reasons I am strongly encouraging all congregations in the Missouri Conference to not gather until we have a clearer indication that it is safe to meet.

However, the decision to hold public worship is a local church decision. It is the Conference's advice that you follow Missouri and your county's health department guidelines and mandates. Please move slowly and carefully toward reopening in-house worship. Pay attention to your local context and authorities. The rules are different in every county across Missouri.

While your church may open worship after May 10, I advise you to refrain from in-house worship through the end of May unless your congregation can guarantee social distancing and appropriate [disinfection cleaning](#) before and after all services. Some congregations have an abundance of space and few people, which helps with social distancing options; other congregations do not. Most counties are advising to restrict attendance to no more than 25% of the building's seating occupancy.

I am aware that disagreements may arise as to what to do and when to reopen in-house worship. If you strongly disagree with the decision, feel free to contact your district superintendent for guidance and assistance. Remember online, drive-up and outdoor services with social distancing could well be our safest option through the month of May.

The Conference offers some [suggestions](#) below for you and your leadership teams to consider as you do begin to move toward re-opening for public worship.

I have spent my entire career trying to communicate that the Church is not a building! That teaching has been met with mixed results. Perhaps that is the silver lining in all of this? I pray that once we are through the worst, we will never lose sight of the Church as the community rather than the bricks and mortar that house our "stuff."

I am very proud to be your bishop. Thank you for the ways in which you have led and continue to lead during this challenging time. Stay faithful. Listen to the experts. Do your best. We will get through this together.

In Christ+

Bishop Robert Farr

The Missouri Area of The United Methodist Church

RESOURCE: [Guidelines for Returning to Our Sanctuaries](#)

VIDEO (can be downloaded for local church

use): <https://vimeo.com/414459527/2f6f6900ef>



Hands in Mission Activities Cancelled for Now

It is with disappointment that I must cancel the first Hands in Mission activity for 2020 due to the COVID-19 pandemic. We were scheduled to work on Saturday, May 9 for Food Outreach's Cook & Pack, so we will reschedule that work at a later time when things return to normal. And, although we did not have a date yet determined for June, I will also not schedule a Clean Stream with the Boy Scouts for this summer. As things progress, I'll determine whether it is advisable to schedule the mid-August school supply shopping for Lifewise, Backpacks & BBQ, that we helped with last summer.

Blessings and peace ,
Jan McCurley



MUSICAL RELIEF!



As we all continue to find new ways to live and enjoy life, I wanted to share two upcoming events to offer you and the ones you love a bit of musical relief!

The Deedle Deedle Dees are a critically-acclaimed band based in New York City. They are known for offering family friendly music inspired by history, science, and folklore. Their concerts are lively, highly interactive, and educational! The Deedle Deedle Dees will be live streaming sing-a-longs on Tuesday and Friday at 9:30am on their Facebook page. These are free events, but the group is accepting donations. More information can be found on their Facebook page, and at their website.

Concert venues and theaters have been dark for several weeks. However, composer Andrew Lloyd Webber has partnered with Youtube in an effort to keep musical theater fans entertained while quarantined. Every Friday, a different musical goes live on **The Shows Must Go On!** YouTube channel, and can be viewed for 48 hours. This week's selection is the lesser known Lloyd Webber show, *By Jeeves*. Future shows have not yet been announced, but 'Cats' is expected to stream before the series ends.

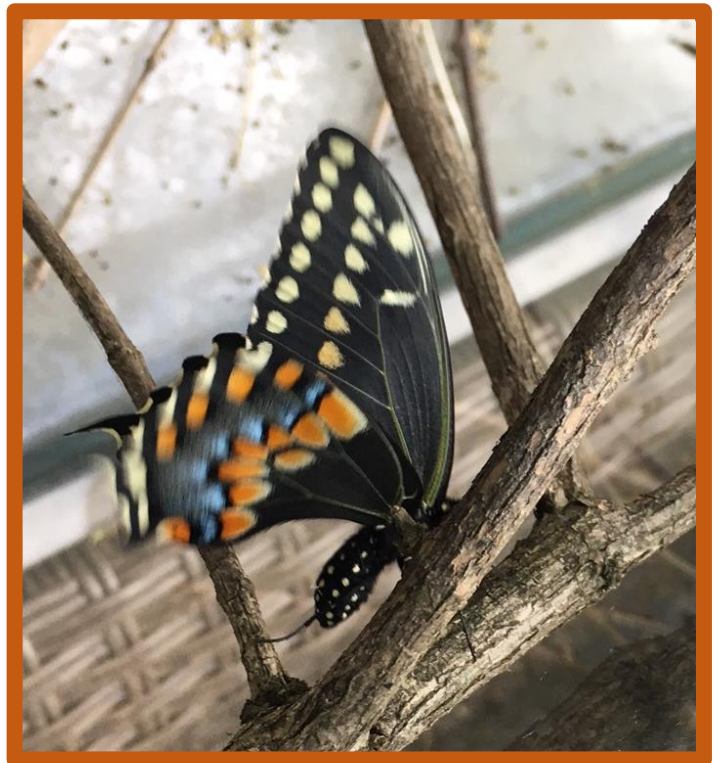
Lamar Fitzgerald,
Director of Music



Sharing!

What are you doing while at home? Let us know! It would be fun to share what you have learned and what projects you have done. Did you start a quilt? Did you learn a new recipe? Did you clean out a closet? Did you finish a project? Or did you start a project? All will be published every week in the Newsletter. Send a sentence or send a paragraph with a photo or two! Please send to secretary@websterum.org by MONDAY EVENING for inclusion of that week's newsletter. Thanks! We are looking forward to connecting with you and hearing from you all summer long!

(I set two Black Swallowtail butterflies free. I sheltered the chrysalis' through the winter... Holly)



Attention High School Seniors! Scholarships Available

Scholarships are available for students who will be graduating from high school this year. Seniors expecting to attend any institution of higher education are encouraged to apply. Application forms are available by contacting Lettie Morse by email at emorse01@earthlink.net and must be returned by May 22th. Applicants must be a member of Webster United Methodist and participating in some church activities.



This is also a good time to consider making a donation to the Memorial or Scholarship Fund. Donations may be designated for scholarships or other church projects in memory or in honor of loved ones-such as a graduating senior.

Lettie Morse, Chair, Scholarship Committee



New Zoom Class Forming!

Hello Church,

I will be leading a new short-term online class called **Women in Faith every Thursday at 4:30pm - starting Thursday, May 14th!** This class will be a discussion-based class influenced by the “We Pray with Her: Encouragement for Women Who Lead” devotional book, the CEB Women’s Bible, and our own experiences with faith. We will explore broader concepts of spirituality within and beyond the typical sphere of Christianity and how we view ourselves within that, and also reflect on matriarchal and feminine figures in the Bible.

This class is open for all ages and genders to participate! Each session will be an independent topic, so if you’re not able to participate every week, no worries. Reach out if you have any questions, I’d love to hear from you. **To participate, drop me an email.** Hope to see you next Thursday!

Josephine Phillips
phillips.josi@gmail.com



Each week on the WUM Children’s Facebook page, I have been posting videos on Monday, Wednesday, and Friday of an activity. Here are this week’s activities:

Monday: Craft- Corner Bookmarks

Wednesday: Story- Chapter 3 of Harry Potter and the Sorcerer’s Stone

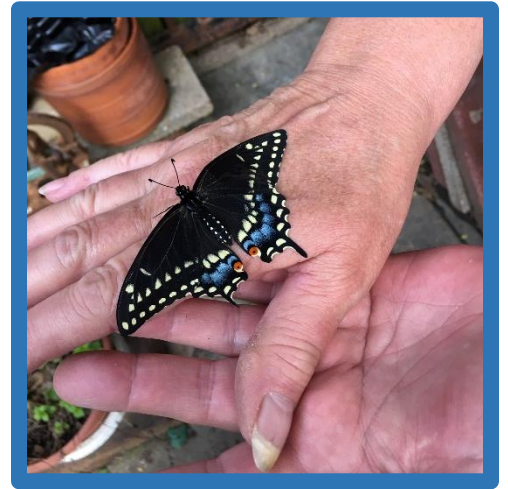
Friday: Cooking- Garlic Herb Bread”

I invite you to post your fun suggestions too!

Thanks,

Trish Sorenson,

Director of Children’s Ministry



Children! We need lots of butterflies to decorate our Ted tree out front of the church! Butterflies are born out of a cocoon, just like a chick from an egg. Both images remind of us of Jesus' resurrection, when God gave Jesus new life.

All you need are coffee filters, magic markers, water, and string/ribbon/pipecleaners. Go to Webster United Methodist Children, Youth, and Families Facebook page to get the instructions from Miss S. Then come by and hang them on the tree for all our walking neighbors to enjoy.

If you would like the supplies mailed to you, contact Pastor Sharon at pastorsharon@websterum.org. I'm happy to mail them to you. Pastor Sharon



Request from Pastor Jose for La Trinidad Families

Our district has received a call for help from Pastor Jose of La Trinidad United Methodist Church, our Hispanic ministry worshipping in south St. Louis County. Many of their families are in acute financial distress, having lost their jobs or been furloughed. The church is seeking support to help meet the demand for food.

WUM will be providing a financial gift from our Loaves and Fishes fund. If you would like to send a gift as well, make your check out to WUM, and add La Trinidad in the memo section.

Our Prayer Concerns



Jo Ann and Pat Claywell; Joyce and Scott Simpson family; Sophia (Anna Schwind); Jacque (Linda Austin); Earl Emert and Roger Johnston (sons-in-law of Jean Major); Lucy Kroenung; Ariana (Jan Hanson); Val (Nephew of Lois Brodt); Everett, Thomas, Heather and Amanda (Karen Clark); Traci Stuart and family; Sally Cobb; Brent and Alison McCurley (Jan McCurley), Libbi Pacatte; Becca Stevens and family (Cindy Andrews); Kate Fuller, Sherry Montford, the Emergency Dept at Barnes Hospital (Helen Fuller), those quarantined in close quarters; Amanda and Caleb Sawyer (Debbie Brooks daughter and husband); Phil Bryan and Sherry Bryan; Ginger (Alma and Merv Wright's daughter); John and Carolyn Denison (Carolyn Redmore's brother and sister in law); Diane and Ron Wallace; Matthew Francis (Lisa Carswell's son); Ryanlyn Mathis; Rachel Krakos; people suffering through natural disasters; medical personnel caring for the sick; those infected with virus; for workers who bring us food; for those caring for small children, doctors, nurses, respiratory therapists, and other healthcare providers

And from our outside Prayer Box: "Please pray for the people with the coronavirus", and "Please pray for my family."



Please join our On Line Worship
Thursdays at 7:30pm
and Sundays at 10:30 am,
on Facebook at Webster United Methodist,
or our website at websterunitedmethodist.org.

You are also invited to join “Prayers with Pastor Sharon”,
at noon on Tuesdays and Thursdays on Facebook or on this page within
our Facebook window.