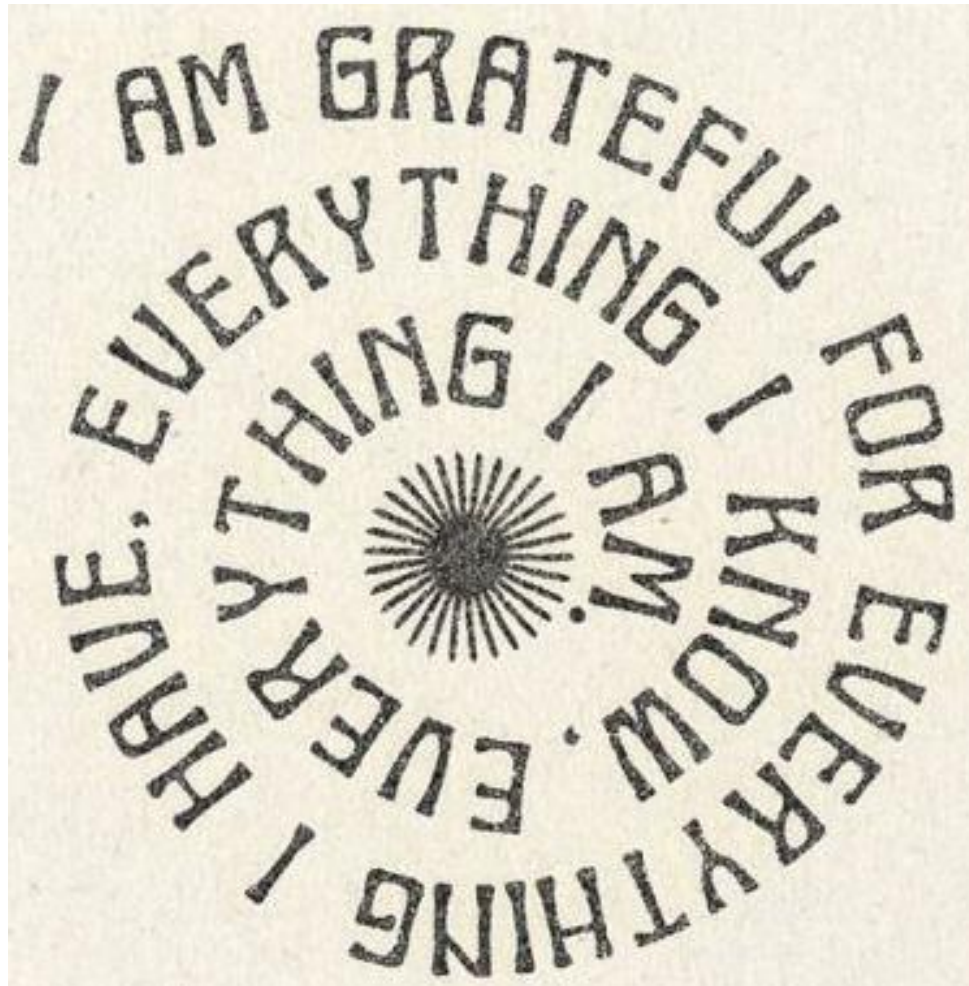


November 19, 2020



Pastor, Rev. Sharon Kichline  
Assistant Pastor, Joshua Krakos  
Music Ministry, Lamar Fitzgerald  
Youth Ministry, Pastor Paige Foster  
Children's Ministry, Shaeleigh Parsons  
Secretary, Holly Graham

[pastorsharon@websterum.org](mailto:pastorsharon@websterum.org)  
[assistantpastor@websterum.org](mailto:assistantpastor@websterum.org)  
[directormusic@websterum.org](mailto:directormusic@websterum.org)  
[directoryouth@websterum.org](mailto:directoryouth@websterum.org)  
[directorchildren@websterum.org](mailto:directorchildren@websterum.org)  
[secretary@websterum.org](mailto:secretary@websterum.org)

314-961-4133

<https://websterunitedmethodist.org/>

## WUM Newsletter Deadline

We welcome news of your ministries! Don't forget: All articles and submissions sent to [secretary@websterum.org](mailto:secretary@websterum.org) by **Mondays at 10a** will be included in that week's newsletter. Thank you! –Pastor Sharon



**As a response to the sharply rising COVID-19 transmissions in the St. Louis County, the church building will be closed for the next 30 days to groups. Individuals with specific tasks may still access the building. And if you have permission to have access, remember, every week, the office will be closed to **Everyone** from Wednesday 6p to Thursday 10a. Thank you! -Pastor Sharon & SPRC**



**Our calendar** <https://websterunitedmethodist.org/calendar/> is important for us to schedule different groups, times and places in our church building...Be sure to email Holly in the office to schedule usage!  
[secretary@websterum.org](mailto:secretary@websterum.org)



## **Needed: Patio Space Heaters for Christmas Eve!**

Yes, you read that right. We're hosting our Christmas Eve service on the parking lot at 4:30pm and desire to BORROW patio space heaters for this adventure. A Traditional Christmas Eve Service will also be available online at 7:30pm. Contact [secretary@websterum.org](mailto:secretary@websterum.org) to lend your patio space heater.



## ...a message from Pastor Sharon

A baby is born in a  
stable in the  
backwater town of  
Bethlehem. His  
parents gave him the  
name Jesus. But the

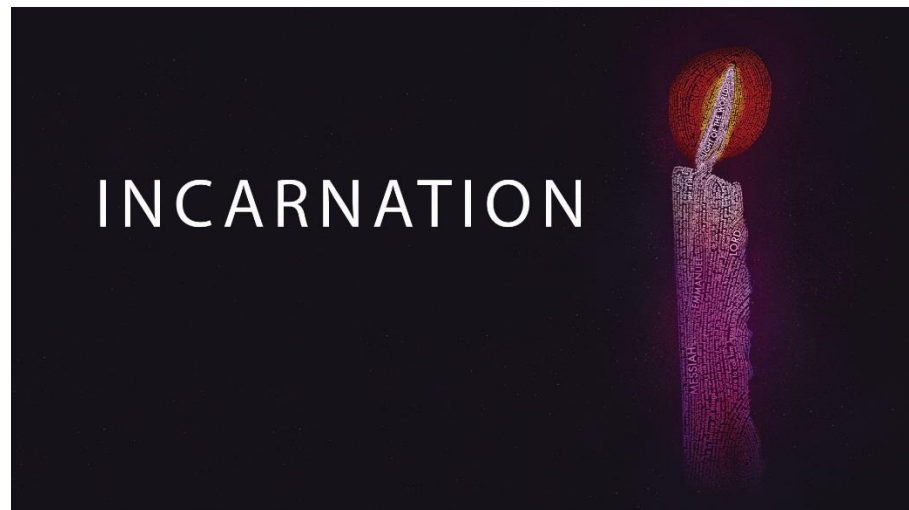
prophets, the shepherds, the wise men and angels addressed him by other names –  
titles really. He was the Messiah, the Lord, the Savior, Emmanuel, the Word made Flesh  
and the Light of the World.

It's a familiar story. We hear it every year, and most years, our children act it out in our  
Sanctuary. But everything's different this year. Advent too. Actually, maybe we need  
this message of God's grace working in the world through the infant Jesus more than  
ever. We need to experience the Light of Christ illuminating hope, peace, joy, and love  
during an especially dark season of our human experience.

I encourage you all to "tune in" for worship this Advent Season, beginning Sunday,  
November 29<sup>th</sup> at 10:30a, (and every Sunday through Christmas Eve), as we explore the  
experiences of others who encountered the child whose birth we celebrate at  
Christmas. So, who is Jesus for you?

November 29	Presidents and Kings
December 6	Savior and Our Need for Saving
December 13	Emmanuel in the Midst of a Pandemic
December 20	The Word Became Flesh
December 24	The Light of the World!

Grace and peace+  
Pastor Sharon





## Celebrate the Upcoming Season

During the month of December, we are inviting members and friends to celebrate the season by sharing a favorite Christmas carol or holiday poem. What is your all-time favorite Christmas song? Do you still remember the Christmas poem you recited as a kid? Do you play a musical instrument? Grab your cell phone and record yourself singing that song or interpreting that poem! All submissions will be included in our holiday virtual series, ***Celebrate the Season***. Please email recordings to: [amarwfitzgerald@hotmail.com](mailto:amarwfitzgerald@hotmail.com)



## STEWARDSHIP 2021



Have you mailed your 2021 Commitment Card to the church yet? We need it now to know how to project for next year.

Misplaced it? Cards are available on our website! Go to <https://websterunitedmethodist.org/> and click on the GIVE tab.

Or stop by the church and find them at the top of the ramp entrance.

Thank you to all who have already responded!  
Joel, Pastor Paige, Derek, and Pastor Sharon



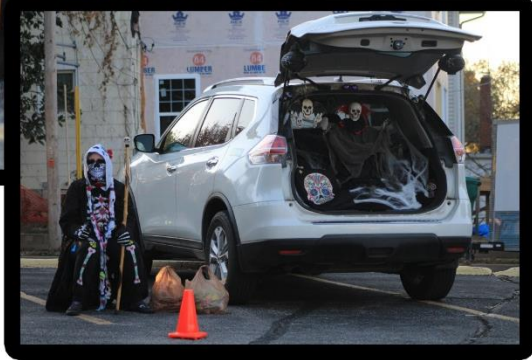


*DRIVE-THRU TRUNK or TREAT! October 30, 2020*









## A Hands in Mission Opportunity to Help LifeWise STL Dec. 5-15

I just received this in the November LifeWise newsletter and hope some people will join me in this volunteer effort. WE HAVE 5 SPOTS RESERVED TO WORK ON WED. 12/9, 1-4 PM AT THE HOLIDAY MARKET DOING GIFT ORDER ASSEMBLY/SHOPPING. CONTACT JAN MCCURLEY IF YOU WANT TO FILL ONE OF THOSE SPOTS; 3 ARE ALREADY TAKEN.

Thanks, Jan McCurley

*For over 50 years, LifeWise STL has celebrated the spirit of the holiday season through our holiday market (formerly known as the Christmas Shop). The market is a way of saying “Keep up the good work!” to our program participants who have been working hard over the past year. With unemployment and underemployment due to COVID, family resources are stretched.*

*This year, due to the pandemic, the Holiday Market will have a different look. The Market will provide carefully curated NEW household items, age appropriate toys, coats, and other non-clothing items (as in the past). But new this year, participants will give us a wish list of items, and volunteers will shop from the list. Participants will pick up their “Holiday Bags” curbside on Dec. 14. Our aim is to strengthen families while connecting them with the generosity of our donors.*

*Volunteers are needed to help sort, organize, and shop for gifts December 5-15. Numerous shifts are available each day. All volunteering will be done in a masked, socially-distanced way.*

*Sign-ups opened Nov 1 on our website ([www.lifewisestl.org/holiday-market/](http://www.lifewisestl.org/holiday-market/)). If you have any questions, please contact Dan Richter at [drichter@lifewisestl.org](mailto:drichter@lifewisestl.org) or 314-627-1233.*





## Puzzles!



Fall and winter are perfect seasons for a puzzle! Pick out a new one or swap out one you've already done. Different levels of difficulty. Located in the elevator foyer at the church. Come help yourself!



## TO GIVE AWAY: CHOIR LOFT SEATING

Do you know of an organization that would benefit from our choir loft seats? They are now located on the stage in Fellowship Hall for your inspection. We only ask that the recipient take care of hauling them away. The Tuesday Crew can even help get them out to the parking lot.

If you don't know of an organization, would you like a couple to add to your TV theater to have as a remembrance of when they served our music program? They can be broken down into sets of two seats. Keep in mind, they must be secured to the floor to keep them from tipping.



Stan Richert, Chair  
Trustees



## **The Lord's Acre Event Will End November 21st**

We are close to wrapping up the Mission Team's Lord's Acre Reinvented event, which ends November 21. We are grateful to all who have given to this point and to those who participated in the fundraiser evening at Panera in Webster Groves. There is still time to give a donation. Just a couple of reminders:

**Every person or family who donates something to the Lord's Acre event this year will be entered in the Lord's Acre Grand Prize Drawing for a Christmas-themed quilt suitable for hanging, hand quilted with embroidered designs by the women in our quilting group. In addition, every donor will receive a thank you goodie bag.**

Here are the giving levels for which we have awards:

- **\$40 level, Buckeye Brownies, or Peanut Brittle, homemade by Ellen Hendrickson**
- **\$45 level, 3 outfits of doll clothes & mask, fit American Girl or any 18" doll, handmade by Sharon Wersching**
- **\$60 level, jar of Wild Grape or Cherry Jelly, homemade by Gene Morse (8 available)**
- **\$65 level, winter-themed wool table runner with charming details, handmade by Sharon Wersching**
- **\$70 vintage-look hand-quilted patchwork piece suitable for hanging or runner**
- **\$75 level, embroidered pillow and bag, handmade by Sharon Wersching**
- **\$100 level, Homemade Pie of choice from Cindy Andrews, Sherry Bryan, or Lettie Morse**
- **\$200 level, handcrafted birdhouse by Gene Morse (6 available)**
- **\$400 level, Riverlands Sanctuary Vacation Home weekend, gift from Sandra Hoffman (2 available)**

We are certainly grateful for any and all donations, but with a limit of 1 award per person/family. Please designate on the check or online form your choice of award, or write "no award desired." If there are more requests for a particular award than we have (some are one-of-a-kind things), we will draw

names. We will make contact with everyone about this information once our campaign is completed, or sometime after Nov. 21st.

Thanks for your generous support,  
Jan McCurley



## Contributing to Lord's Acre Helps Fund Many Mission Agencies

Last year, our Lord's Acre funds were able to lend financial support to many agencies in St. Louis and beyond. It is our one and only Mission fundraiser. Our support to our covenant church in Mozambique of \$1400 is always our largest expenditure. However, we also annually give financial support to LifeWise, Epworth, WRHM, Doorways, Home First STL, Metropolitan Congregations United, and Hodgen Tech.

Briefly, here is a snapshot of some of those agencies:

- **LifeWise** is currently providing crisis services for food distribution, rent & utilities aid, breakfast and lunch for children, early childhood care, and the upcoming Holiday Market items.
- **Epworth Children & Family Services** helps children, youth and families move toward self-sufficiency by focusing on health, housing, education, and employment.
- **WRHM** is currently working to provide food, needed services & aid to those who are unemployed or out of their homes, Thanksgiving and Christmas meals and gifts for their clients, among other things.
- **HomeFirstSTL** connects homeless people with affordable housing, community resources, and volunteer advocates.
- **Doorways** provides housing services for persons living with HIV/AIDS.
- **Metropolitan Congregations United** puts faith into action by developing leaders who move their congregations, organizations, and communities to change public policy for the common good.
- **Hodgen Tech** is a St. Louis City elementary school where we not only provide 24 one-on-one reading tutors (when there is no pandemic) to primary grade children but also gift books and teacher appreciation materials.



Please prayerfully consider how your contributions to Lord's Acre this year might help the Mission Team continue our support of these agencies during these unprecedented times when their vital work is needed more than ever.

**Our campaign runs just through November 21<sup>st</sup>. You may give online or mail in your contribution.**

Our sincere thanks,  
The Risk-Taking Missions Team



My Dear Friends,

It is imperative that if you are planning on **scheduling a gathering**, whether outside in the parking lot, or anywhere in the building, that you inform the office ([secretary@websterum.org](mailto:secretary@websterum.org)) so we can respect social distancing of groups.

We welcome you, but we still need to keep a distance between people and groups by scheduling on the calendar.

Stay home and stay well,

*Holly*



**Our Prayer Concerns:** Carol Carinci (Debbie Lund); Morgan (Margo Petracek); Ron and Carol Wright (Bev Messey); Linda Dill; Mary Emery Waston

(Beth Anderson); Kevin & Judy Casey (Cindy Andrews); Mike Brooks (Debbie's husband), Jacque (Linda Austin); Lorraine Bemis; Doris Thomas, (Randy Thomas); Kristen Kremer; Traci Stuart, Richard (Beth Anderson); Skip Reynolds (John and Sharon Wersching); Peter Schüren (Debbie Lund); Gayle Fields; Todd (Gordon Ballam); Sherry Dodd, Mia (Paula Murphy); Carol and Jim Simpson (Clarke Montford); Dorothy Reid (Sandy Reid); Darlene Hyry, Henry Hoyer (Vicki Hoyer); Victor Browning (Janet Iggulden); Andrew Kennon and family, Amanda Kohlfeld (Marcia Kennon); Joe Krabbe and family; Mary Felden Peters; Jodi and Chris Medieta (Joel Kichline); George and Norena Badway (Toni Miceli's parents); Jo Ann and Pat Claywell; Joyce and Scott Simpson family; Ariana (Jan Hanson); Stuart /Reesor family; Sally Cobb; those quarantined in close quarters; Amanda and Caleb Sawyer (Debbie Brooks' daughter and husband); Sherry Bryan; John and Carolyn Denison in Lake Charles, LA (Carolyn Redmore's brother and sister-in-law); Ryanlyn Mathis; Health and Healing for COVID patients; Our country's future; Students and Teachers; people suffering through natural disasters; for workers who bring us food; for healthcare providers.

**To have your prayer requests included, please contact us using the:**

- Connection Card located on our website,
- Prayer Request form on our website,
- Email [secretary@websterum.org](mailto:secretary@websterum.org)
- Contact one of our pastors:
  - Pastor Josh at [assistantpastor@websterum.org](mailto:assistantpastor@websterum.org)
  - Pastor Paige at [directoryouth@websterum.org](mailto:directoryouth@websterum.org)
  - Pastor Sharon at [pastorsharon@websterum.org](mailto:pastorsharon@websterum.org)