

WEEKLY NEWS LETTER JULY 27, 2023 PART 2

Pastor
Rev. Sharon Kichline

pastorsharon@websterum.org

Music Ministry
Lamar Fitzgerald

directormusic@websterum.org

Director of Children's &
Youth Ministries
Anna Tkacz

directoryouth@websterum.org
directorchildren@websterum.org

Administration &
Communications Coordinator
Cavin Clive

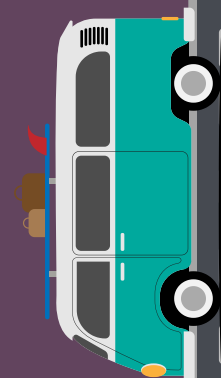
admin.communications@websterum.org

Secretary

secretary@websterum.org

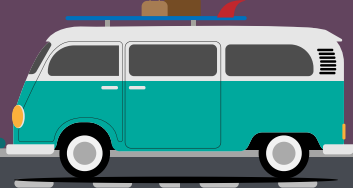
www.websterunitedmethodist.org

314-961-4133





YOUTH LEADING WORSHIP ON SUNDAY



PRESENTATION OF THE BENSON SCHOLARSHIP OF \$2,500 TO LUCY KROENUNG



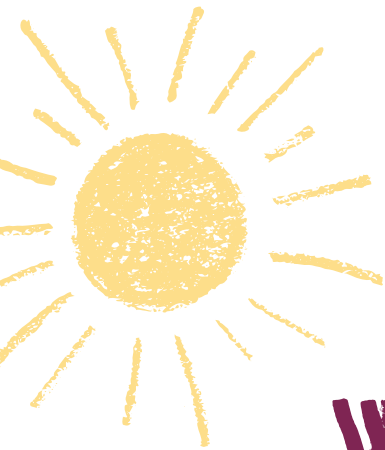
The Scholarship Fund was begun by Henry and Jan Prince many years ago. We are grateful for any donations in memory or honor of loved ones. Members of the committee are Margaret Skouby, Stan Richert, Debbie Lund and Alice Treece.

The standards for the Henry and Jan Prince Scholarship Fund are as follows: The student must be a member of Webster United Methodist and have participated in church activities. The scholarship will be awarded based on the student's need as compared to the family's income. We also take into consideration the student's academic grades, but a high grade average is not necessary to receive a scholarship.

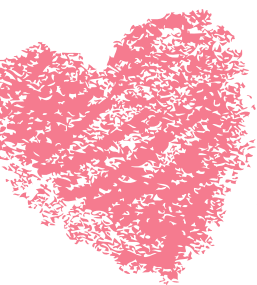
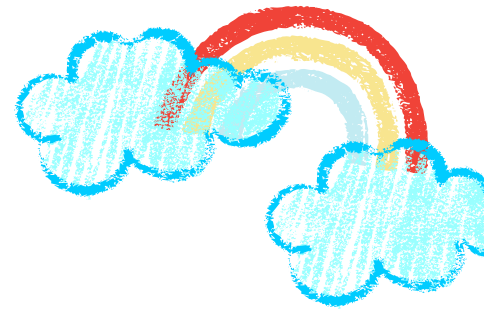


Lucy Kroenung has been a member of youth group and participated in all mission trips since she was eligible and a wonderful participant in March to the Manger several times. At school she was on the yearbook staff and she assisted with the charity "Webster Tackles Cancer". She has worked with children at the Olympic Gymnastics Center and has also been a nursery aide here for 2 years. She plans to attend St. Louis Community College (Meramec) towards a degree in Early Childhood Education.

We're pleased to award Lucy a \$2500 scholarship for her continuing education.

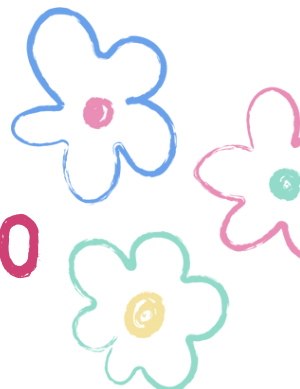


CHILDREN'S MINISTRY



WATER BALLOONS & CHALK DRAWING

AUGUST 4, 2023 AT 9:30-11:30





LAST WEEK FOR SCHOOL SUPPLIES COLLECTION!

This is our last week for collecting school supplies to be divided and donated to **LifeWise StL, Epworth Children & Family Services, and Webster Rock Hill Ministries**. As of Monday, July 23rd we have collected **562 items**! A large **blue collection bin** is on the **southwest corner of the parking lot** near the holly trees. In addition, there are collection buckets in the first floor lobby and the main sanctuary entrance.

Items in bold text are ones that are needed most at this time.

If you have questions about this project, contact Cindy Andrews, 314-277-9368, or via email: cyndrews@gmail.com.

Thank you to ALL for your generous donations!

3 Ring binders

Pencils, #2 (preferably Ticonderoga)

Pencil cases or pouches

Pencil sharpeners (hand held)

Pens—blue, black, or red ink

Erasable pens

Colored pencils

Erasers

Washable markers, primary colors

Crayons, boxes of 16 or 24

Highlighters

School glue

Glue sticks

Scissors, blunt tip

Scissors, pointed tip

Folders, with & without prongs

Rulers

Composition notebooks

Single subject notebooks

Graphing paper

Scientific calculators

Graphing calculators

Backpacks

Tennis shoes





NEWSLETTER ARTICLE DEADLINE

All articles and submissions must be sent to secretary@websterum.org by Monday at 5pm to be in that week's newsletter.

