

Weekly Newsletter

FEBRUARY 1, 2024



Pastor

Rev. Sharon Kichline

pastorsharon@websterum.org

Music Ministry

Lamar Fitzgerald

directormusic@websterum.org

Director of Youth &
Children's Ministry

Amanda Furbee

directoryouth@websterum.org

directorchildren@websterum.org

Administration &
Communications Coordinator

Cavin Clive

admin.communications@websterum.org

Student Pastor

Cassandra Lenoir

studentpastor@websterum.org

Secretary

secretary@websterum.org

www.websterunitedmethodist.org

314-961-4133



A WORD FROM OUR PASTOR

How Have We Loved?

Having just completed and submitted our Year-end Reporting for 2023, I feel compelled to share with you a piece of it that brought great pleasure to me.

In answer to the question, "How many ministries do you have relating to outreach, justice, and mercy?", I learned from our ministry leaders the creative ways in which we have been faithfully sharing God's love with others. Here are some of them. Just for fun, try ticking off the ones you have engaged in or supported.

- *Hosting a monthly evening gathering for children to play and learn about Jesus.*
- *Contributing to the Children's UNICEF Collection.*
- *Halloween Trunk or Treat, welcoming our neighbors for some spooky fun.*
- *Loom Ministry to create plastic bag mats for those who sleep on the ground.*
- *Lunches for Epworth's Drop In Center, serving youth in St. Louis.*
- *Fall Yard Clean Up for some of our neighbors.*
- *Assembly of Feed the Need rice meals.*
- *Advocacy to stand against Anti-Transgender bills being considered in the MO legislature.*
- *Participation with the AID/Clergy Coalition to remove property racial covenants.*
- *Tower Grove Pride Festival sponsorship and participating in the UMC Booth.*
- *Learning and sharing the challenges of the Faith Climate Action Week in our church.*
- *Participating in the local Gun Violence Awareness Rally.*
- *Collecting signatures for the Healthy Family Initiative Petition.*
- *Contributing to Epworth Brown Bag Collection for hungry neighbors.*
- *Adding to the Sox and Skivvies Collection for families served by LifeWise.*
- *Sponsoring a Cardinals Baseball ticket for the LGBT youth served by Epworth Drop In Center.*
- *Raising a record total from Harvesting Hope for Missions Dinner and Auction, to be shared among many local ministries.*
- *Bringing in warm clothing for the Coat Collection to be distributed by InExcelsis.*
- *Adding to the School Supplies Collection for children of St. Louis.*
- *Providing Thanksgiving meals for our Webster and Rock Hill neighbors.*
- *Encouraging reading through Hodgen Reading Mentors.*
- *Serving local families through food collections for LifeWise Pantry and for Webster Rock Hill Ministries.*
- *Hosting immigrant cooks as part of Welcome Neighbor, STL.*
- *Serving or donating to the LifeWise Holiday Market.*

While this is not a complete listing of our ministries that serve others, it is a fine collection of diverse and practical ministries that communicate to others that God loves them, cares for them, and is for them. Congratulations, Webster United Methodist! I am so very proud to serve with you!

Grace & peace +

PASTOR SHARON



PRAYER CONCERNS

Bev Mesey; Stacy Ponder; Seira Stuart; Traci Stuart; Lou Stuart; Hensons' neighbors who lost house in fire; Mimi (Sandy Reesor); Teri Samples (Connie Kroenung); Peter Schuren & Manfred Effinger (Debbie Lund); Teri Ann Wallace, & Pat Delf (Marcia Kennon); Mary Lynn Jones Wright (Cindy Andrews); our election year; and world peace.

Lettie Morse thanks everyone for their prayers for Randy Turman -- he's been declared free from cancer.

Our First Sleeping Mat Completed!

The Wednesday, Jan. 17 weaving night was successful, with a small group of 4 inspired to do more. Following that evening, Louise & Randy Thomas and Ellen Hendrickson not only finished the weaving but bound the edges for a completed sleeping mat. Then, they restrung the loom, preparing it for the next mat. Thanks to them for their fine work, we have now begun mat 2!





WILD WEDNESDAY

FEBRUARY 7, 2023, FROM 5:30 - 7PM

**GOD HAS CREATED THE FOUR SEASONS,
AND WE ARE GOING TO CELEBRATE WINTER!**

**CHILDREN 4 YEARS OLD THROUGH 6TH GRADE
ARE INVITED TO JOIN US FOR DINNER, GAMES,
AND LEARNING.**

Please register your children or
ask for more information by emailing
directorchildren@websterum.org
or call 314-961-4133 and leave a message.





FEBRUARY FOOD DRIVE

**FOR LIFEWISE STL &
WEBSTER ROCK HILL MINISTRIES**



**The Missions Team has chosen
February for Webster United
Methodist to collect food
for the City Market at LifeWise
StL and the Food Pantry at
Webster Rock Hill Ministries.**

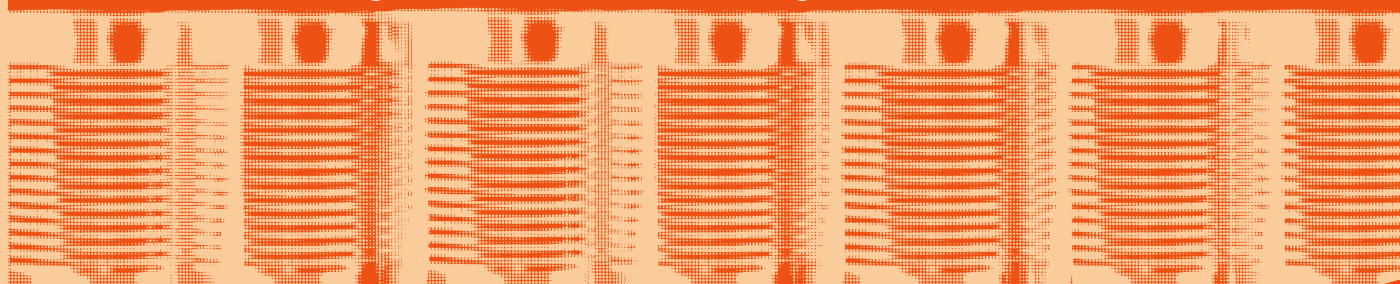


**Collection containers will be in the Sanctuary Lobby & First Floor Lobby
(aka Elevator Entrance). Our goal is to collect 400 food items during
February. Thank you all in advance for your generous donations!**

FOODS REQUESTED FOR THIS DRIVE:

- Canned Vegetables
- Canned Tuna
- Rice
- Oatmeal
- Peanut Butter
- Olive Oil
- Canned Fruit
- Canned Chicken
- Pasta
- Cream of Wheat
- Cashew Butter
- Soup
- Grocery Store Gift Cards
- Dried Beans
- Cereal
- Spices
- Almond Butter

**Please check labels and avoid foods
high in salt and sugar content.**



HERE'S A CHANCE TO JOIN



A VOLUNTEER-IN-MISSION WORK TEAM FORMING FOR MAY

We are returning to our favorite place to serve others---Midwest Mission near Springfield, IL---for a work week with space for **10 people**. **The dates are Monday, May 13th – Thursday, May 16th 2024.** Some people from last year's team are eager to return, but there are plenty of spaces open to join.

The lodging is very spacious and comfortable; the work shifts have morning and afternoon breaks as well as a long lunch break, and the day is over between 3:30 and 4 :00 PM. We always meet plenty of friendly people and enjoy relaxing evenings with our teammates. It is definitely a break from routine, and quite enriching. Talk to some of us who have participated in the past if you are thinking about this new experience.

- **Dates:** Depart on Monday AM, May 13—Return Thurs. PM, May 16
- **What is Midwest Mission?** It is a United Methodist-affiliated disaster relief facility providing disaster relief kits, school desks, educational & medical supplies, etc., locally, nationally, and internationally
- **The work:** There is something for every ability—packing kits, sewing school bags, building & refinishing school desks, repairing bicycles and sewing machines, organizing materials, unloading items, filling shipping containers, etc.
- **Cost:** will be determined based on number of people going, but it will be minimal for dormitory lodging and supplies, plus food & gas expenses

IF YOU ARE INTERESTED IN JOINING THE TEAM, CALL JAN MCCURLEY AT 314-781-3969 (H) TEXT OR CALL 314-378-5504(C) OR EMAIL JANIS.MCCURLEY@GMAIL.COM NO LATER THAN MARCH 3.



**UNITED WOMEN IN FAITH
DISTRICT LENTEN
REFLECTION, BRUNCH,
LEADERSHIP TRAINING,
AND HANDS ON MISSION
PROJECT**

**SATURDAY,
FEBRUARY 17 TH**

**Camp Jo Ota
1272 State Hwy MM
Clarence, MO 63437
10:00 AM—1:00 PM**

**PROGRAM: JESUS AS THE
BREAD OF LIFE**

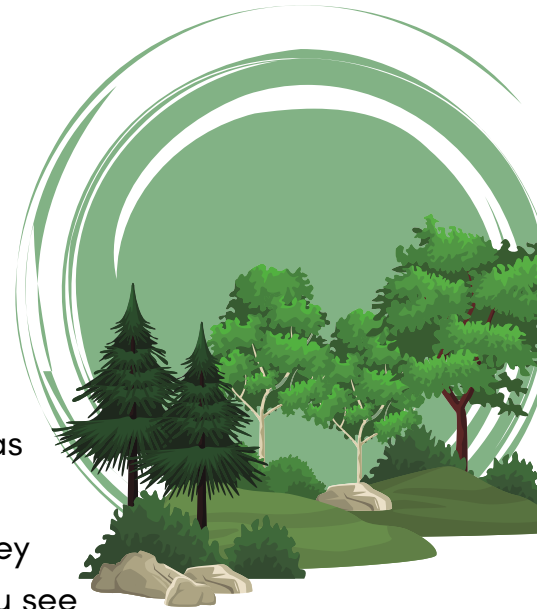
**9:30 Registration, \$12.00
payable at the door**

**REGISTRATION FORMS ARE AVAILABLE
ON THE UWF BULLETIN BOARD
IN FELLOWSHIP HALL**

DEADLINE TO REGISTER: FEBRUARY 10TH

Caring for Our Planet: A Personal Focus

Webster United Methodist has long been concerned about our planet, God's Creation, and the things we do or don't do that impact its ability to nurture us and all God's creatures. As the climate changes and as weather events become more extreme, we are forced to think more about what we can do as individuals, families and communities. Sometimes the news overwhelms us and a feeling of helplessness prevails. The survey linked [here](#) is an effort by your church Justice Team to help you see how much you may already do, as well as give you ideas for more actions you can take that are within your reach. We hope you and your family will gather to respond. We will compile your responses and report back to you, using your ideas to determine next projects we might undertake to support the health of our environment.



Take the survey by clicking on the [link](#). If it's easier for you, you will find paper copies available in the Narthex (main church entrance off Bompert) and the entrance by the elevator. These may be returned to the church office. We ask you please to respond by February 16.

Debbie Lund for the Justice Team

SAVE THE DATE!

UNITED WOMEN IN FAITH

**WINTER
GATHERING**

SATURDAY, FEBRUARY 24TH

**10:00 AM—BRUNCH WITH
PROGRAM TO FOLLOW**



Senior Cruisers to Orchid Show!

**THE WUM SENIOR CRUISERS ARE
PLANNING A TRIP TO THE ORCHID
SHOW AT MISSOURI
BOTANICAL GARDEN ON
THURSDAY, FEBRUARY 8TH.**

We will meet in the church parking lot at 10:30 a.m. to carpool to MOBOT, see the Orchid Show, and have lunch at Sassafras Café (in the same building as the Orchid Show). The Orchid Show is included with general admission fee (\$6 with proof of St. Louis City or County residency) and lunch in the Café will be approximately \$15-\$20. Please note that MOBOT is a cashless venue—you will need to pay with a credit or debit card.



Sign up on the Connection Card on Sunday morning or call Marcia Kennon at 314-914-3871 or Cindy Andrews at 314-277-9368.